

Forged Eye Bolts



Fatigue Rated

QUIC-CHECK®



SEE APPLICATION AND WARNING INFORMATION

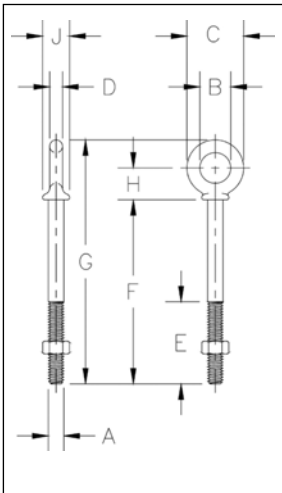
Para Español: www.thecrosbygroup.com

On Pages 196-197

G-277



- Forged Steel - Quenched and Tempered.
- Fatigue rated at 1-1/2 times the Working Load Limit at 20,000 cycles.
- Working Load Limits shown are for in-line pull. For angle loading, see page 196.
- Meets or exceeds all requirements of ASME B30.26 including identification, ductility, design factor, proof load and temperature requirements. Importantly, these bolts meet other critical performance requirements including fatigue life, impact properties and material traceability, not addressed by ASME B30.26.
- All Bolts Hot Dip galvanized after threading (UNC).
- Furnished with standard Hot Dip galvanized, heavy hex nuts.



G-277 Shoulder Nut Eye Bolts

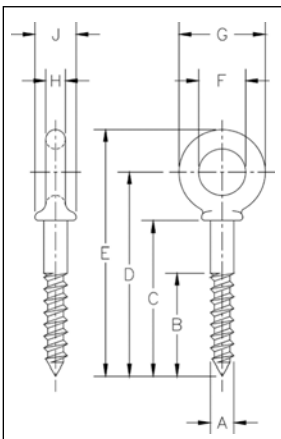
Shank Diameter & Length (mm)	G-277 Stock No.	Working Load Limit (t)*	Weight Per 100 (kg.)	Dimensions (mm)								
				A	B	C	D	E	F	G	H	J
6.35 x 51.0	1045014	.29	2.99	6.35	12.7	22.4	4.85	38.1	51.0	74.5	12.7	11.9
6.35 x 102	1045032	.29	4.13	6.35	12.7	22.4	4.85	63.5	102	125	12.7	11.9
7.94 x 57.0	1045050	.54	5.67	7.85	15.7	28.4	6.35	38.1	57.0	89.0	17.5	14.2
7.94 x 108	1045078	.54	8.53	7.85	15.7	28.4	6.35	63.5	108	140	17.5	14.2
9.53 x 63.5	1045096	.70	9.71	9.65	19.1	35.1	7.85	38.1	63.5	101	19.8	16.8
9.53 x 114	1045112	.70	11.5	9.65	19.1	35.1	7.85	63.5	114	152	19.8	16.8
12.7 x 82.5	1045130	1.18	19.3	12.7	25.4	44.5	9.65	38.1	82.5	130	25.4	23.1
12.7 x 152	1045158	1.18	25.8	12.7	25.4	44.5	9.65	76.0	152	200	25.4	23.1
15.9 x 102	1045176	2.35	31.1	15.7	31.8	57.0	12.7	51.0	102	164	33.3	28.4
15.9 x 152	1045194	2.35	46.4	15.7	31.8	57.0	12.7	76.0	152	214	33.3	28.4
19.1 x 114	1045210	3.26	66	19.1	38.1	70.0	15.7	51.0	114	189	39.6	35.1
19.1 x 152	1045238	3.26	76	19.1	38.1	70.0	15.7	76.0	152	227	39.6	35.1
22.2 x 127	1045256	4.80	102	22.4	44.5	82.5	19.1	63.5	127	215	46.7	39.6
25.4 x 152	1045292	6.03	166	25.4	51.0	95.5	22.4	76.0	152	253	53.0	46.0
25.4 x 229	1045318	6.03	192	25.4	51.0	95.5	22.4	102	229	329	53.0	46.0
31.8 x 203	1045336	9.52	295	31.8	63.5	114	25.4	102	203	323	62.5	58.0
31.8 x 305	1045354	9.52	361	31.8	63.5	114	25.4	102	305	425	62.5	58.0
38.1 x 381	1045372	10.8	646	38.1	76.0	140	31.8	152	381	527	76.0	70.0

*Ultimate Load is 5 times the Working Load Limit. Maximum Proof Load is 2 times the Working Load Limit.



G-275

- Forged Steel — Quenched and Tempered.
- Hot Dip galvanized.



G-275 Screw Eye Bolts

Shank Diameter & Length (mm)	G-275 Stock No.	Weight Per 100 (kg)	Dimensions (mm)								
			A	B	C	D	E	F	G	H	J
6.35 x 51.0	1046111	1.95	6.35	38.1	51.0	63.5	74.5	12.7	22.4	4.83	11.9
7.94 x 57.0	1046139	4.49	7.85	42.9	57.0	74.5	89.0	16.0	28.7	6.35	14.2
9.53 x 63.5	1046157	8.56	9.65	47.8	63.5	83.5	101	19.1	35.1	7.87	16.8
12.7 x 82.5	1046175	17.0	12.7	62.0	82.5	108	130	25.4	44.5	9.65	23.1
15.9 x 102	1046193	38.8	16.0	76.0	102	135	164	31.8	57.0	12.7	28.4

Rigging Accessories