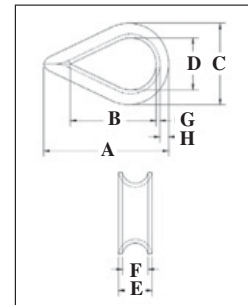


# Wire Rope Thimbles



**G-411**

- Hot Dip galvanized steel.
- The standard choice for light duty applications and loading conditions.
- Meets the performance requirements of EN13411-1:2002.



## Standard Wire Rope Thimbles

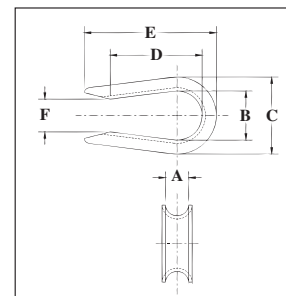
Rope Dia.		G-411 Stock No	Weight Per 100 (kg)	Dimensions (mm)							
(mm)	(in)			A	B	C	D	E	F	G	H
3-4	1/8	1037256	1.59	49.3	33.3	26.9	17.5	6.35	4.05	1.25	3.30
5	3/16	1037274	1.59	49.3	33.3	26.9	17.5	7.85	5.60	1.25	3.30
6-7	1/4	1037292	1.59	49.3	33.3	26.9	17.5	9.65	7.10	1.25	3.30
8	5/16	1037318	1.81	54.0	38.1	31.8	20.6	11.2	8.65	1.25	3.30
9-10	3/8	1037336	3.04	60.5	41.4	37.3	23.9	13.5	10.4	1.50	4.06
11-13	1/2	1037354	5.67	70.0	47.8	44.5	28.7	17.5	13.5	2.05	4.83
16	5/8	1037372	15.7	89.0	57.0	60.5	35.1	23.1	16.8	3.30	8.64
18-20	3/4	1037390	21.4	95.5	63.5	68.5	41.4	27.4	19.8	3.55	8.64
22	7/8	1037416	38.4	127	89.0	81.0	47.8	32.3	23.9	4.05	11.2
24-26	1	1037434	44.2	145	108	95.5	63.5	35.3	26.9	4.05	10.4
28-32	1-1/8 - 1-1/4	1037452	79	159	114	109	70.0	44.5	33.3	5.60	12.7

G-411 meets the performance requirements of Federal Specification FF- -276b Type II, except for those provisions required of the contractor. For additional information, see page 444.



**G-408**  
(Open Pattern)

- Hot Dip galvanized Steel.
- Meets the performance requirements of EN13411-1:2002.
- Recommended for light duty applications in which it is being assembled into another fitting (i.e., shackle or master link).



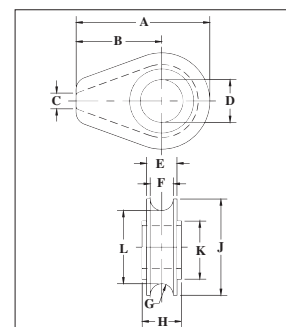
## Open Pattern Thimbles

Rope Dia.		G-408 Stock No.	Weight Per 100 (kg)	Dimensions (mm)					
(mm)	(in)			A	B	C	D	E	F
6-7	1/4	1037531	1.36	7.10	17.5	26.9	35.8	51.5	9.65
8	5/16	1037559	1.72	8.65	20.6	31.8	38.9	55.0	12.7
9-10	3/8	1037577	3.18	11.2	23.9	37.3	43.7	62.5	15.7
11-13	1/2	1037595	5.67	13.5	28.4	44.5	37.3	72.0	19.1
16	5/8	1037611	11.3	16.8	35.1	60.5	59.5	91.0	25.4



**S-412**

- Cast Ductile Iron.
- Fits pin for open wire rope socket, boom pendant clevis and wedge socket.



## Solid Wire Rope Thimbles

Rope Dia.		S-412 Stock No.	Weight Each Per 100 (kg)	Dimensions (mm)										
(mm)	(in)			A	B	C	D	E	F	G	H	J	K	L
13	1/2	1037121	.28	71.5	44.5	6.35	26.9	19.1	14.2	7.10	22.4	54.0	41.4	39.6
16	5/8	1037149	1.00	119	76.0	9.65	33.3	26.9	20.6	10.4	28.7	86.0	57.0	65.0
18-20	3/4	1037167	1.05	119	76.0	9.65	38.1	26.9	20.6	10.4	35.1	86.0	57.0	65.0
22	7/8	1037185	2.47	154	97.0	12.7	44.5	35.1	26.9	13.5	41.4	114	82.5	87.5
24-26	1	1037201	2.38	154	97.0	12.7	54.0	35.1	26.9	13.5	46.0	114	82.5	87.5
28-30	1-1/8	1037229	4.21	184	116	16.0	60.5	44.5	33.3	16.8	52.5	137	98.5	103
32-35	1-1/4 - 1-3/8	1037247	4.45	184	116	16.0	67.0	49.3	38.9	19.8	58.5	137	98.5	105